

---

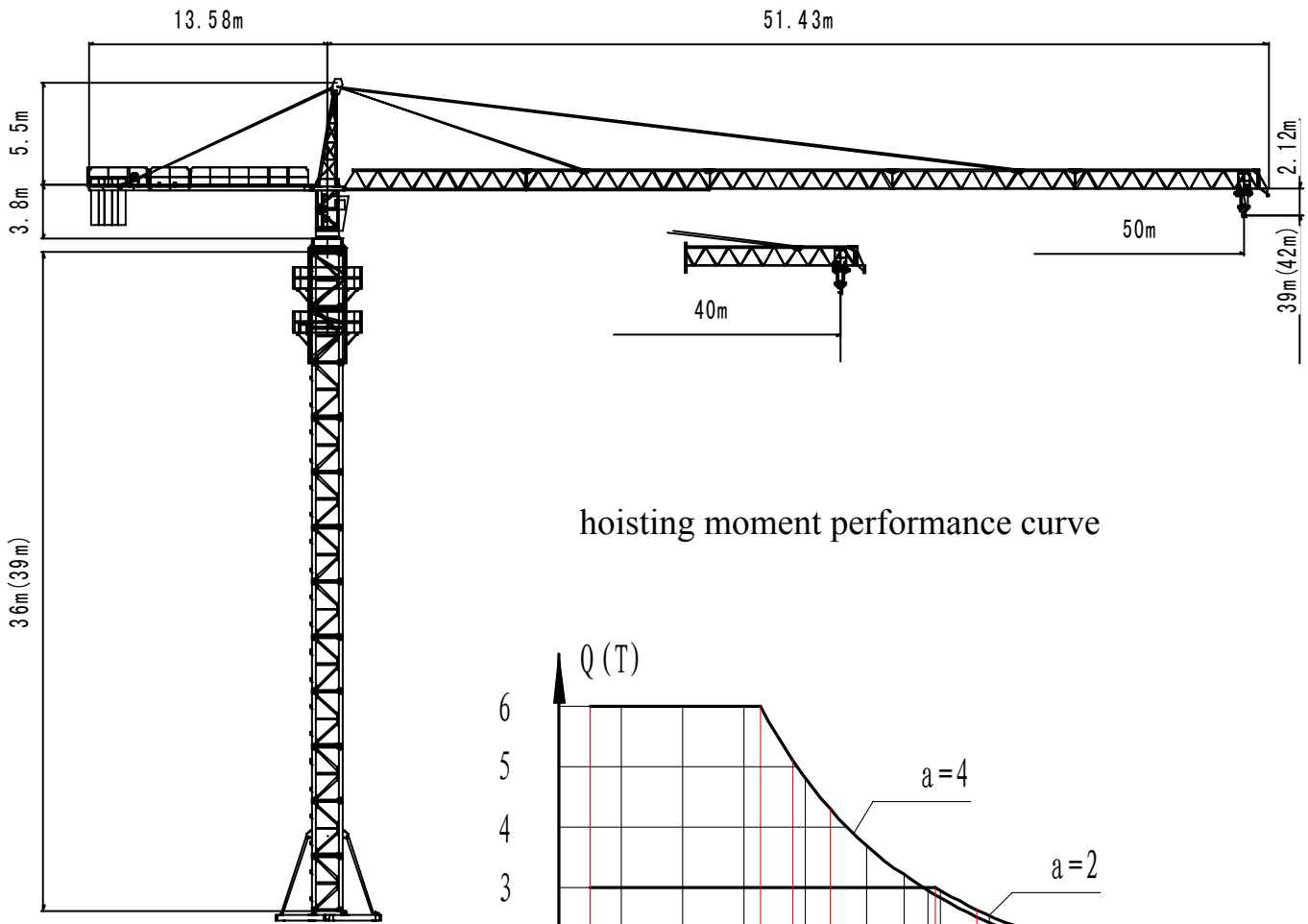
IV QTZ80 SERIES

i QTZ80A (5015)

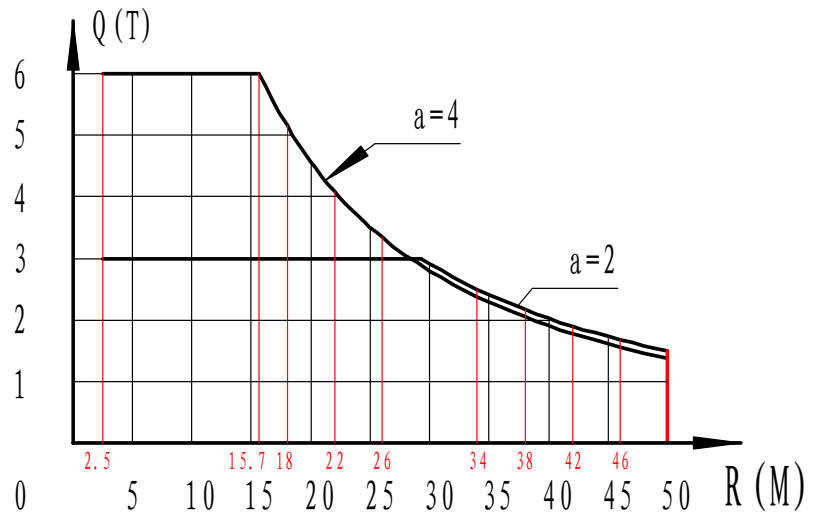
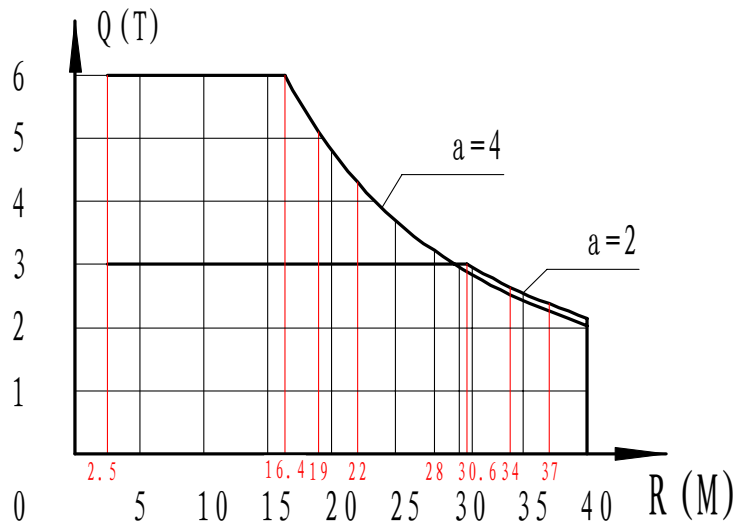
TABLE OF CONTENTS

1. structural diagram and hoisting performance curve
2. main technical parameter
3. main parts parameter
4. main metal parts list

# 1. structural diagram and hoisting performance curve



hoisting moment performance curve



## loading diagrams

50 m jib	4 fall	radius m	2.5~15.7	18	22	26	30	34	38	42	46	50	
		capacity t	6	5.163	4.088	3.344	2.798	2.381	2.052	17.85	1.565	1.38	
	2 fall	radius m	2.5~29.3					30	34	38	42	46	50
		capacity t	3					2.916	2.499	2.170	1.904	1.684	1.5
40 m jib	4 fall	radius m	2.5~16.4	19	22	25	28	31	34	37	40		
		capacity t	6	5.1	4.302	3.696	3.220	2.836	2.520	2.255	2.03		
	2 fall	radius m	2.5~30.6						31	34	37	40	
		capacity t	3						2.955	2.639	2.374	2.15	

## 2. main technical parameter

item		unit	parameter						
Metric lifting moment KN.m		KN.M	800						
Max. lifting capacity		T	6						
Rated lifting capacity in max. working radius		T	1.5						
Working radius		M	2.5~50						
Hoisting height	Independent	M	39						
	attachment	M	120						
Hoisting speed	fall		2			4			
	Hoisting speed	M/min	8.4	40	80	4.2	20	40	
	Max lifting capacity	T	3	3	1.3	6	6	3	
Slewing speed		R/min	0.61						
Trolley speed		M/min	21/42						
Climbing speed		M/min	0.5						
Weight	Independent structure	T	31						
	Counter-balance	T	12						
	Stationary structure	T	35						
Max. slewing radius		M	51.43						
Counter-jib slewing radius		M	13.58						
Max. working wind speed		M/s	20						
Climbing wind speed $\leq$		M/s	13						
Working environment temperature		°C	-20~+40						

### 3. main parts parameter

item			parameter	
Hoisting	Electric motor	Model		YZTD 225L <sub>2</sub> 4/8/32
		Power	Kw	24/24/5.6
		Turning rate	R/min	1460/730/150
	brake	Model		ZDJ <sub>1</sub> -300
		Braking moment	N.m	630
		Hydraulic braking		YT <sub>1</sub> -45
	Decelerate motor	Model		JZQ500
		Speed Ratio		I=10.35
Steel rope			35×7-12.5-1670	
Slewing	Electric motor	Model		YZR132M <sub>2</sub> -6
		Power	Kw	2×3.7
		Turning rate	R/min	908
	Decelerate motor	Model		XX4-80-155
		Speed Ratio		I=155
	brake			Electromagnetism braking
Turning support			QW1250.40	
Trolleying	Electric motor	Model		YDEJ112M 8/4
		Power	Kw	1.5/2.4
		Turning rate	R/min	700/1410
	Decelerate motor	Model		BW4-43
		Speed Ratio		I=43
Steel rope			6×19-6.2-1550- II -zs	
Hydraulic lifting	Electric motor	Model		Y132S-4 B5
		Power	Kw	7.5
		Turning rate	R/min	1440
	Hydraulic Station	Oilurn model		HSGK01-160/110E
		Route of travel	mm	1650
	Discharge of Hydraulic Station		L/min	Q=10
Working Pressure		MPa	20	

#### 4. main metal parts list

NAME	MATERIAL SPECIFICATION	REMARK
Standard section	Main chord ∠160×160×16 (Mn)	external dimensions 1600×1600 overall height:3000
jib	Upper chord ø102×8	total 5 sections
	Lower chord angle steel weld-square ∠90×90×9, ∠80×80×8, ∠70×70×7	Jib section connected through pin
Tower-cap	Main chord angle steel weld-square ∠100×100×10	space truss structure of bilateral symmetry and spire welded by angel steel and steel board
Upper and lower abutment	Main steel board δ20 ∠160×160×16	welded by steel board and angle steel weld-square
Counter jib	Main chord [28a	welded by u-steel, angle steel and expanded metal
Cover frame	Main chord angle steel weld-square ∠120×120×12	Space frame structure welded by u-steel, angle steel and steel board
Tow kinds of underframe	Main frame u-steel weld-square cross beam [32a	welded by u-steel weld-square and steel board
	Main frame u-steel weld-square [28a	welded by angle steel and steel board
Drawbar of jib	Ø50, Ø55 (16Mn steel) Steel board (16Mn steel)	welded by 16Mn steel