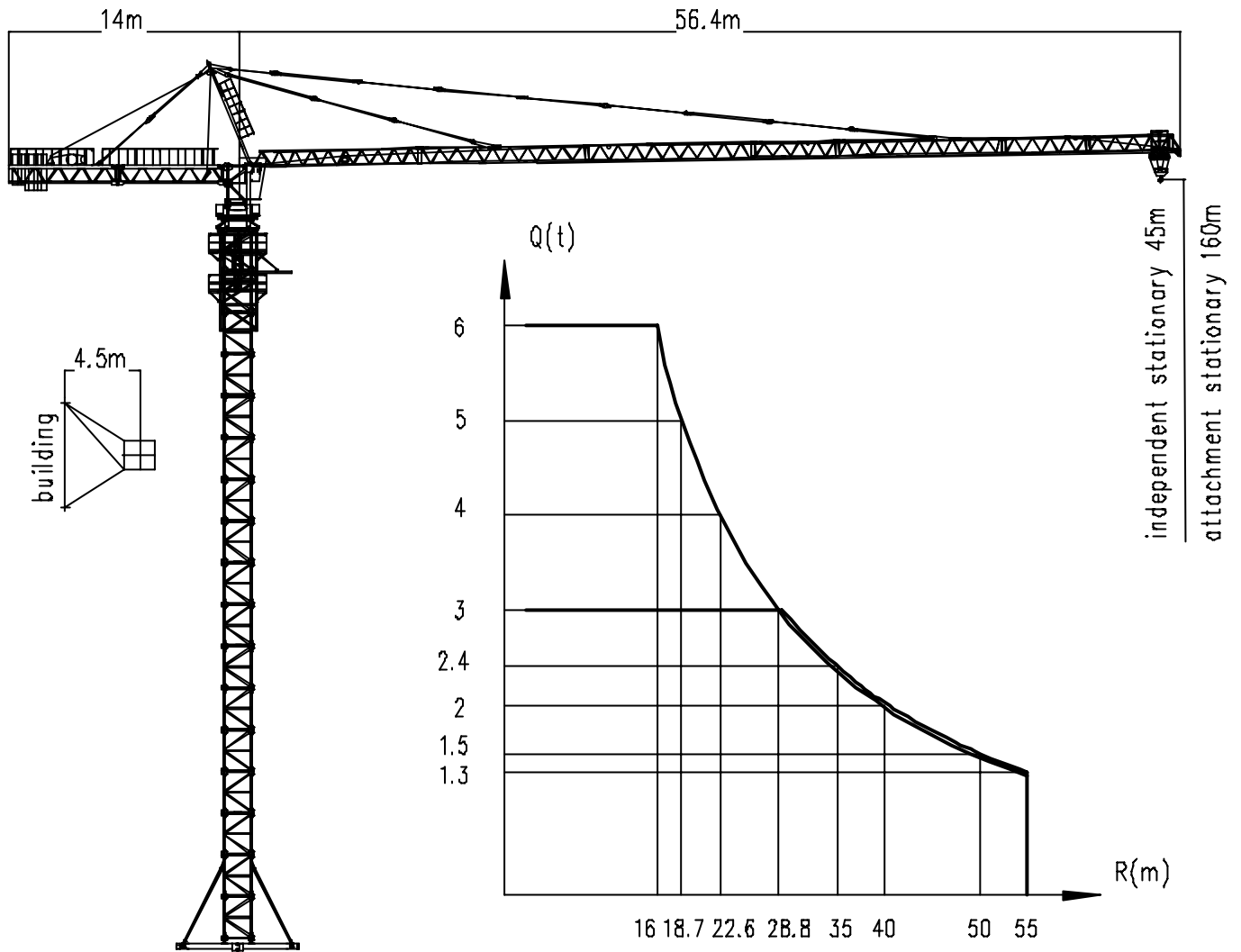

ii QTZ80C (5513)

TABLE OF CONTENTS

1. structural diagram and hoisting performance curve
2. main technical parameter
3. main parts parameter
4. main metal parts list

1. structural diagram and hoisting performance curve



4 fall	radius m	2.2-16	21	27	31	37	41	47	51	55
	capacity kg	6000	4370	3250	2740	2190	1910	1580	1400	1250
2 fall	radius m	2.2-29.2			31	37	41	47	51	55
	capacity kg	3000			2800	2240	1960	1630	1450	1300

2. main technical parameter

item		unit	parameter			
Metric crane moment KN.m		KN.M	800			
Max lifting capacity		T	6			
lifting capacity in max working extent		T	1.3			
Max. Working extent		M	2.5-55			
Lifting height	Independent	M	45			
	attachment	M	160			
Lifting speed	rate		2		4	
	Lifting speed	M/min	40	80	20	40
	Max. lifting capacity	T	3	1.5	6	3
Slewing speed		R/min	0.6			
Speed of trolley		M/min	21.7/43.4			
Lifting speed		M/min	0.5			
Weight	Counter-balance	T	13			
	Weight of tower crane	T	36.01 / 40.69(with underframe)			
	Weight of structure independent		34.01			
Max slewing radius		M	55.525			
Tail slewing radius		M	14			
Max working Wind speed		M/s	20			
Lifting wind speed ≤		M/s	13			
Working environment temperature		℃	-20~+40			

3. main parts parameter

item			parameter	
Hoisting	Motor	Model		YZRTDW250 M 4/8
		Power	Kw	30/30
		Rotate speed	R/min	725/1420
	brake	Model		ZDJ ₁ -300
		Braking moment	N.m	785
		Hydraulic braking		YT ₁ -90/8
	reducer	Model		JZQ650
Speed Ratio		I=15.75		
Steel rope			6×37-7×7-13	
Slewing	Motor	Model		YZR132M ₂ -6
		Power	Kw	2×3.7
		Rotate speed	R/min	908
	Reducer	Model		XX4-100-147planetary reducer
		Speed Ratio		I=147
	Brake			Electromagnetism braking
Slewing rear bearing			QW1400.40	
Trolleying	Motor	Model		YDEZ132S 8/4
		Power	Kw	2.2/3.3
		Turning rate	R/min	700/1410
	Reducer	Model		BL22-43-3.3 cycloid pinwheel reducer
		Speed Ratio		I=43
Steel rope			6×16-7.7	
Hydraulic lifting	Motor	Model		Y132S-4 B5
		Power	Kw	7.5
		Turning rate	R/min	1440
	Hydraulic Station	cylinder model		HSGK01-160/110E
		Route of travel	mm	1320
	Discharge of Hydraulic Station			L/min Q=10
Working Pressure			MPa 20	

4. main metal parts list

NAME	MATERIAL SPECIFICATION	REMARK
Standard section	Main chord □135×135×12	external dimensions 1750×1750 overall height:2500
jib	Upper chord ø121×8	total 7 sections Jib section connected through pin
	Lower chord angle steel weld-square ∠100×100×10, ∠80×80×8 ∠70×70×7	
Tower cap	Main chord [20a	welded by u-steel
Upper and lower abutment	Main steel board δ25、δ30 ∠140×140×14	welded by steel board and angle iron weld-square
Counter jib	Main branch ∠140×140×14	welded angle iron and expanded metal
Over frame	Main chord φ102×10	Space frame structure welded by steel tube and steel board
Tow kinds of underframe	Main frame u-steel weld-square cross beam [32a	Crossing steel welded with the steel plate
	Imbed part □135×12	Welded by Square tube and steel board
Drawbar of jib	φ52, φ58 (16Mn steel) Steel board (16Mn steel)	welded by 16Mn steel